

FOR LEASE
SPACES: ±2,417 SF

BASIN STREET
PROPERTIES

1700

**CORPORATE CIRCLE
PETALUMA | CA**

Trevor Buck | Executive Director
T +1 415 451 2436 F +1 415 485 1341
trevor.bucl@cushwake.com
CA License #01255462

Steven Leonard | Managing Director
T +1 415 451 2434 F +1 415 485 1341
steven.leonard@cushwake.com
CA License #00909604

Brian Foster | Managing Director
T +1 415 451 2437 F +1 415 485 1341
brian.foster@cushwake.com
CA License #01393059

1700

CORPORATE CIRCLE
PETALUMA | CA

HIGHLIGHTS

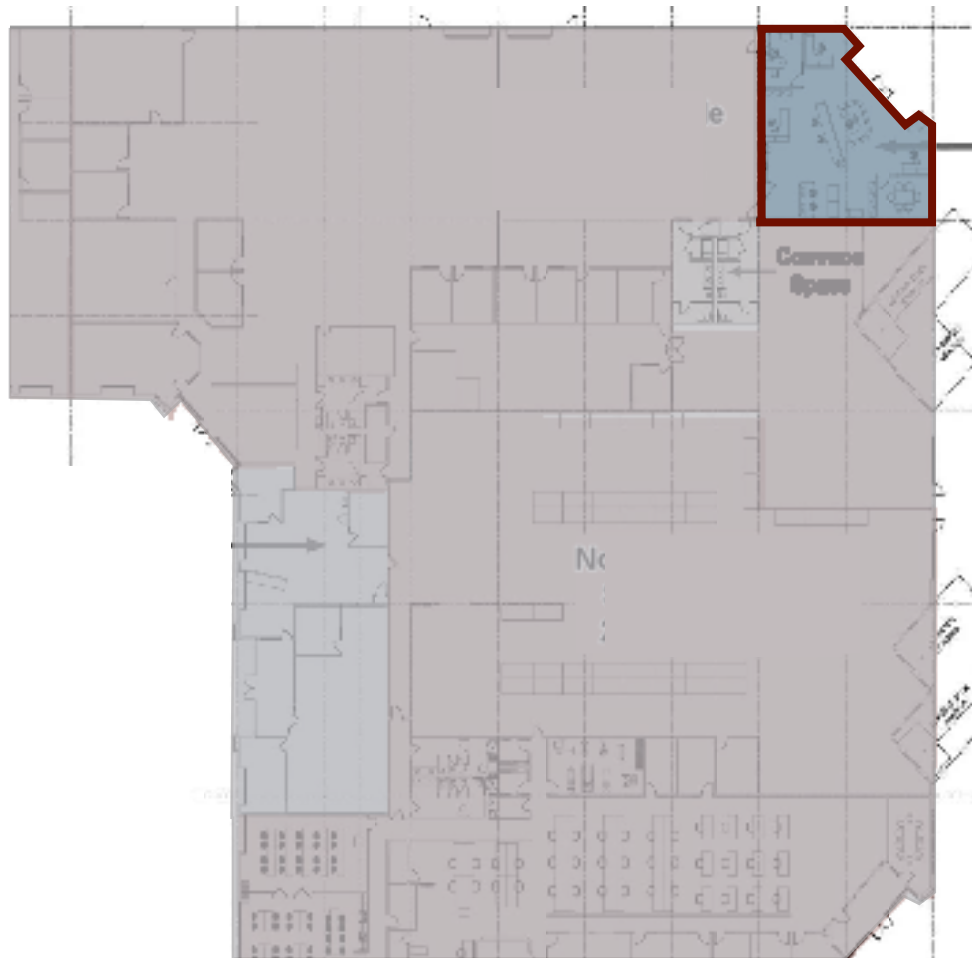
- Suite 1700: 2,417 SF Office Space - warehouse
- 28' clear height
- Adjacent to Shollenberger Park with walking paths
- Across from Adobe Creek Retail Center and close to many commercial services, restaurants, and other conveniences
- Rare opportunity to lease office/warehouse combination in south Petaluma
- Prompt decision making and uncomplicated negotiations by local, reputable owner
- Adjacent to major North Bay transportation routes

FOR LEASE

FLOOR PLAN: 1690 CC

BASIN STREET
PROPERTIES

1700
CORPORATE CIRCLE
PETALUMA | CA



Suite 1700
2,417 SF



Trevor Buck | Executive Director
T +1 415 451 2436 F +1 415 485 1341
trevor.bucl@cushwake.com
CA License #01255462

Steven Leonard | Managing Director
T +1 415 451 2434 F +1 415 485 1341
steven.leonard@cushwake.com
CA License #00909604

Brian Foster | Managing Director
T +1 415 451 2437 F +1 415 485 1341
brian.foster@cushwake.com
CA License #01393059

1700

CORPORATE CIRCLE
PETALUMA | CA

LOCATION

Petaluma is located in Sonoma's Wine Country just 36 miles north of San Francisco and the Golden Gate Bridge. This historic city along the Petaluma River provides a unique combination of a strong job market and educated workforce with a healthy rural lifestyle and vibrant food and music scene.

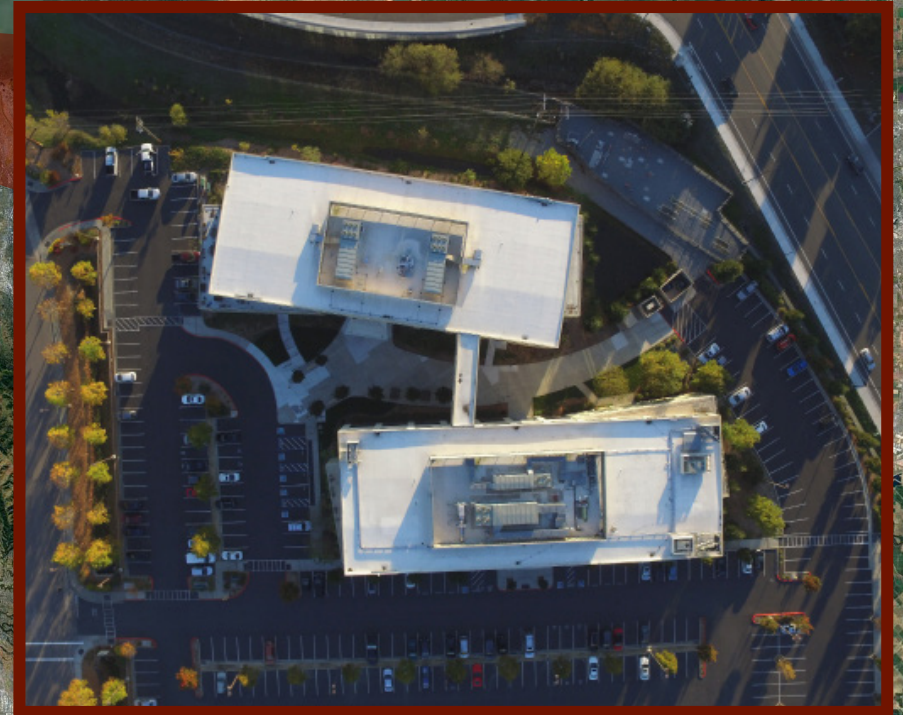
Petaluma

Novato

San Rafael

Oakland

San Francisco



ABOUT US

About Basin Street Properties

Founded in 1974, Basin Street Properties has truly come a long way. The company has grown from the small entrepreneurial firm of the early years to owning and managing close to five million square feet of commercial real estate across two states. As a privately held company, Basin Street remains unique in the industry relative to the speed and ease that decisions - and deals - can be made.

Basin Street's investment in Petaluma is clearly their principal legacy; it has changed the fabric of that town forever. The company has demonstrated a profound understanding of how real estate can change a community, and strives to shape that impact with every development or investment in their current markets of Petaluma, Santa Rosa, Sacramento and Reno.

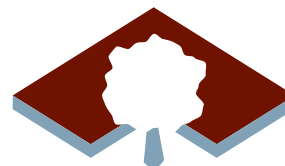
Today, Basin Street has the right team in place to successfully navigate rapid growth. Just like in days past, their focus remains on "creating environments where you can thrive."

About Cushman & Wakefield

The new Cushman & Wakefield draws on the best of both legacy organizations (DTZ and Cushman & Wakefield) to create one of the world's largest real estate services firms, with a combined total of \$5 billion in revenue, 43,000 employees, more than 4.3 billion square feet under management, and \$191 billion in transaction value. Cushman & Wakefield now operates in more than 60 countries around the world and is well positioned in every major market for continued growth.

The new Cushman & Wakefield is a top-tier global commercial real estate services provider in every service line and every major geography in the world. With a tenacious, entrepreneurial, and client-centric culture of highly skilled people behind both firms, the new company will be able to tap into greater resources worldwide to ultimately deliver superior results for clients.

Please visit cushmanwakefield.com for more information.



BASIN STREET
PROPERTIES



Trevor Buck | Executive Director
T +1 415 451 2436 F +1 415 485 1341
trevor.bucl@cushwake.com
CA License #01255462



Steven Leonard | Managing Director
T +1 415 451 2434 F +1 415 485 1341
steven.leonard@cushwake.com
CA License #00909604



Brian Foster | Managing Director
T +1 415 451 2437 F +1 415 485 1341
brian.foster@cushwake.com
CA License #01393059