

FOR LEASE **Santa Rosa**

131 Stony Circle



Strategic Location in the Stony Point Area of Santa Rosa



FOR LEASE **Santa Rosa** **131 Stony Circle**



Strategic Location in
the Stony Point Area of
Santa Rosa

Office space totaling
3,011 SF

Type:
Office

Address:
**131 Stony Circle
Santa Rosa, CA**

of Floors
**Two Buildings:
1 Story**

DESCRIPTION

Two single-story buildings provide a professional and spacious atmosphere with high quality improvements, great glass lines, and efficient design. They are located in a parklike setting with easy access to Highway 12 and Highway 101. The open floor plans provide flexibility of layout and ease of move-in. Basin Street. is the on-site property management company. 5:1,000 parking provides plenty of spaces, even for medical uses. The suites offer direct access to the individual suites from the parking lots.

AMENITIES

- 2 building, single story office project
- Assortment of floor plans and square footages
- Move-in ready suites available
- Floor to ceiling windows
- Outdoor BBQ, picnic area and a beautiful lake
- Free ample parking for your employees and clients
- Park like setting with meandering pathways
- Many amenities and business services within walking distance
- Close proximity to Downtown Santa Rosa
- Prompt decision-making and uncomplicated negotiations by local, reputable owner

KEY TENANTS

Variety of tenants include such firms as: Sutter Health & Community Child Care Council (4C's)



EXCLUSIVELY MARKETED BY:
Shawn Johnson
DRE#: 00835502

Peter Briceño
DRE#: 01885655

FOR LEASE **Santa Rosa**
131 Stony Circle

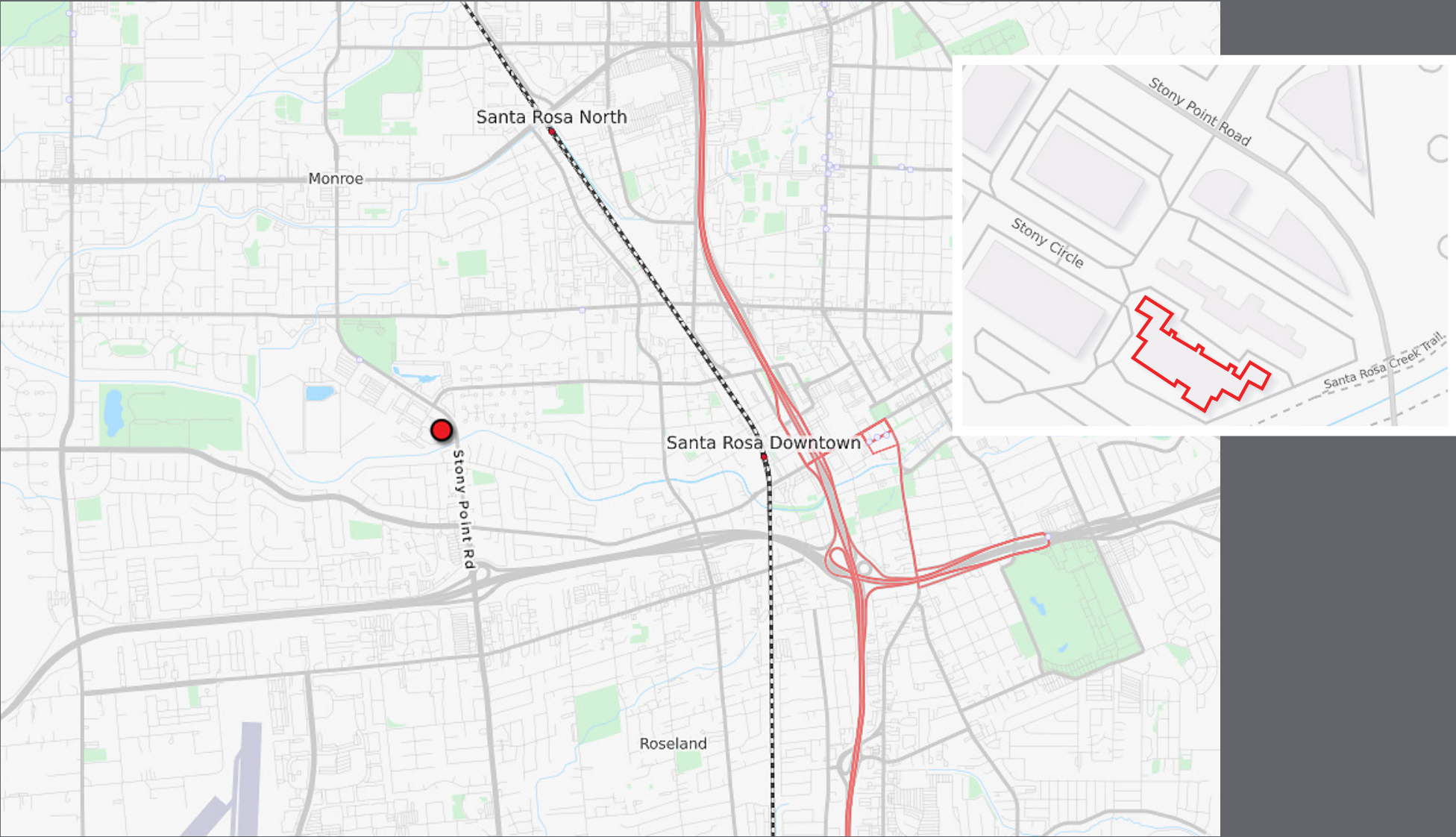


EXCLUSIVELY MARKETED BY:
Shawn Johnson
DRE#: 00835502

Peter Briceño
DRE#: 01885655

FOR LEASE **Santa Rosa**
131 Stony Circle

Located in Santa Rosa's premier Stony Point office park, with immediate proximity to Highways 101 and 12, public transportation, and amenities.



EXCLUSIVELY MARKETING BY:

Shawn Johnson
DRE#: 00835502

Peter Briceño
DRE#: 01885655

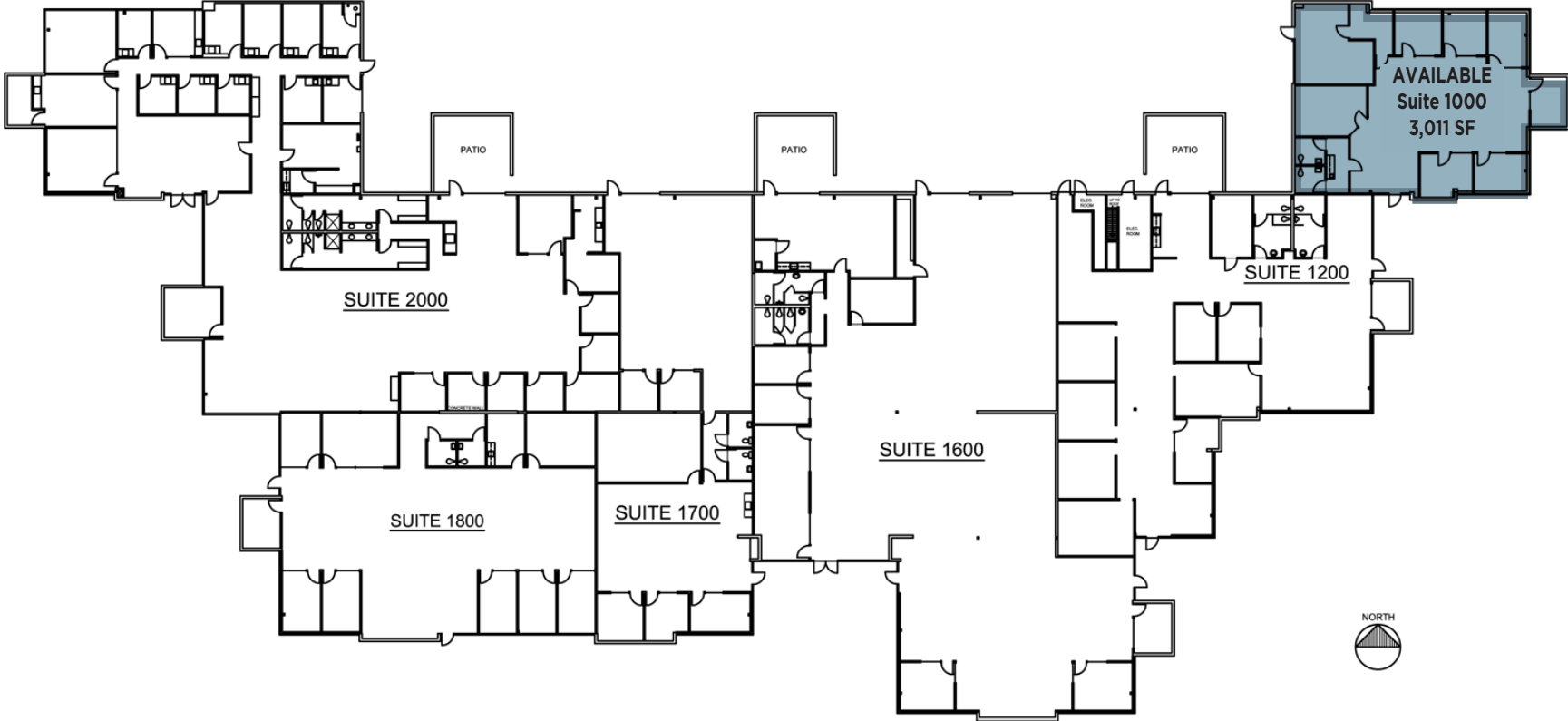
FOR LEASE **Santa Rosa**
131 Stony Circle - Building B



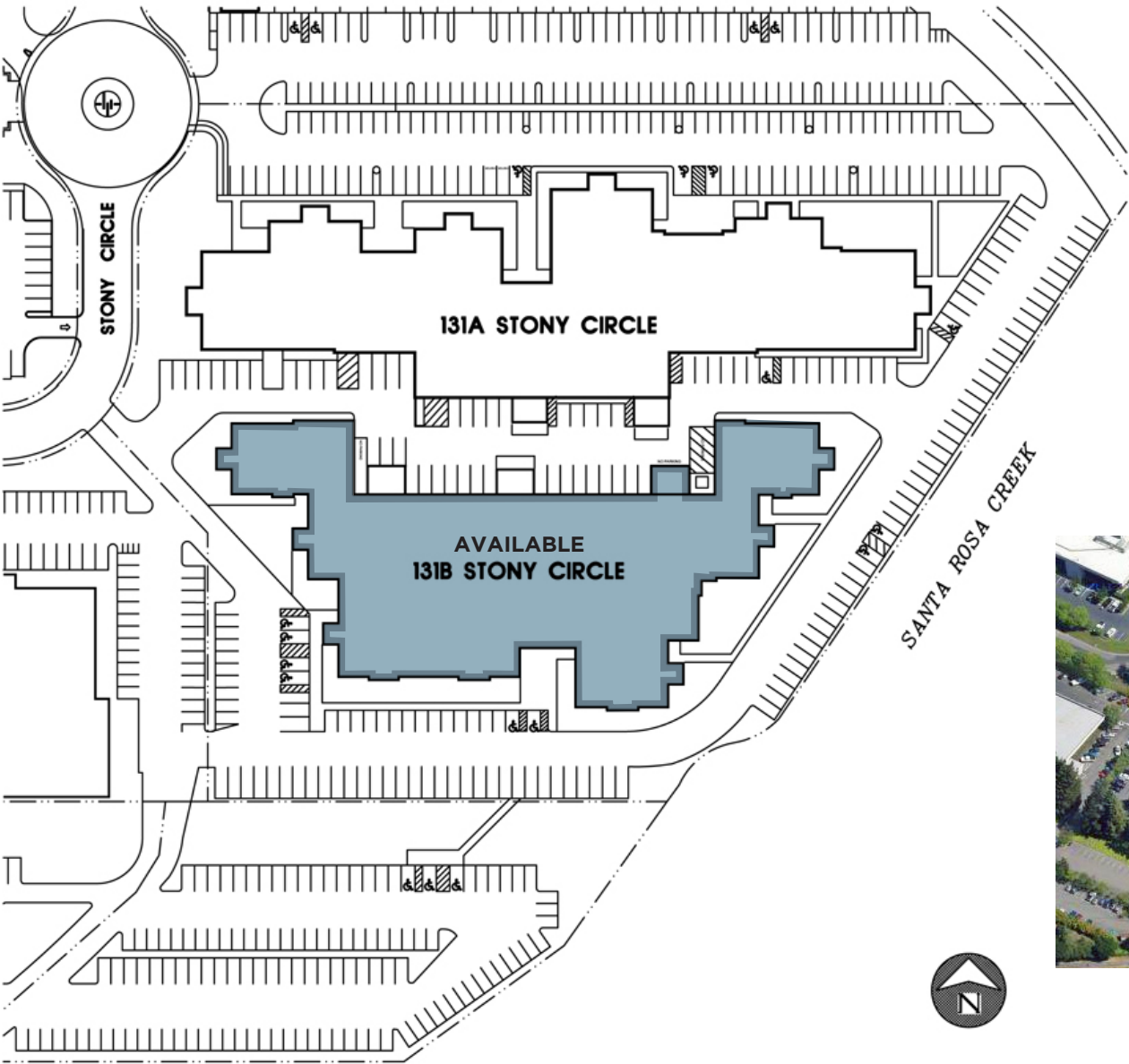
3,011 RSF

131 Stony Circle
Building B

- Suite 1000
- Private Restrooms



FOR LEASE **Santa Rosa**
131 Stony Circle - Site Plan



EXCLUSIVELY MARKETED BY:
Shawn Johnson
DRE#: 00835502

Peter Briceño
DRE#: 01885655